

# KOH 40-S High Power Fixture Guide

Indoor | Surface/Suspended | Output up to 2190lm

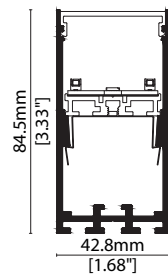


## Key applications

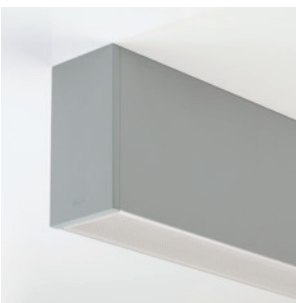
- ✓ Ceiling
- ✓ Office lighting
- ✓ Downlighting
- ✓ Wall grazing
- ✓ Interior

## Key features

- ✓ Control Gear
- ✓ Form factor: Large
- ✓ Custom lengths
- ✓ High lumen efficacy
- ✓ Decorative
- ✓ IP40
- ✓ Diffusion: Homogenous
- ✓ Lensed
- ✓ Direct view
- ✓ Output max
- ✓ Extensive CCT range



## MOUNTING METHODS



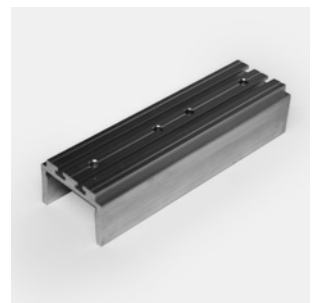
Surface mounting via screws



KKSW-07 Suspension mounting kit



KKSW-08 Ceiling rose



KKJT-03 Joining bar

# KOH 40-S High Power

## Specification sheet



<b>Dimensions</b>	H84.5/W42.8/L580-1700mm (H3.33/W1.68/L22.83-66.93in)
<b>PCB Cut-point</b>	560/1120/1680mm (22.05/44.09/66.14in)
<b>LED Pitch</b>	-
<b>Chip</b>	<b>h-line CREE/Lumileds</b>
<b>Cover/Optics</b>	Louvre + (Frosted/10°/20°/30°/Spread Lens)
<b>CCT</b>	<b>h-line</b> : 2200K/2700K/3000K/3500K/4000K/5000K
<b>LED binning</b>	<b>h-line</b> : 4-step MacAdam Ellipse (5000K)
<b>CRI</b>	≥90 (2700K/3000K) ≥80 (2200K/3500K/4000K) ≥75 (5000K)
<b>Lifetime</b>	50,000 hours @ 25°C (50,000 hours @ 77°F)
<b>Operating temp</b>	T <sub>a</sub> = -20 to 45°C (T <sub>c</sub> max = 62.9°C) T <sub>a</sub> = -4 to 113°F (T <sub>c</sub> max = 145.2°F)
<b>IP Rating</b>	IP40
<b>Finish</b>	Matt Silver/Grey/White/Black/Bronze Powder Coated
<b>Mounting</b>	Surface mounting via screw fixing, suspended via suspension kit
<b>Power feed</b>	Male/female connectors
<b>Control</b>	0-10V/DALI (Integrated Power Supply)



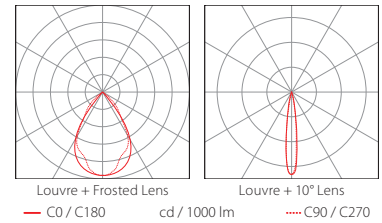
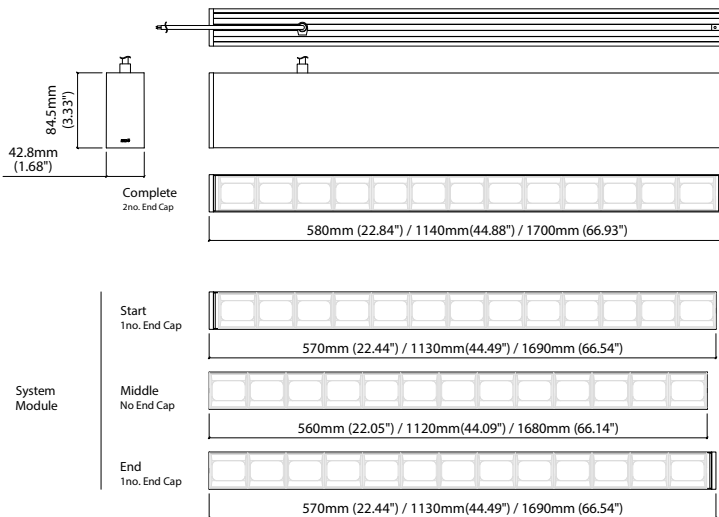
### LED Grading Key

#### Exclusive Grade

<b>h-line*</b>	*KKDC tuned
Constant Voltage Lensed High Power LED	CCT range
3-step CCT range (4-step for 5000K)	

<b>Power consumption</b>	<b>Supply voltage</b>	<b>Supply current</b>	<b>Power factor:</b>
33.5W	240V AC 50Hz	0.14A	0.95 @ 239.99V, 50Hz

	<b>Louvre + Frosted Lens</b>	<b>Louvre + 10° Lens</b>	<b>Louvre + 20° Lens</b>	<b>Louvre + 30° Lens</b>	<b>Louvre + Spread Lens</b>	<b>CRI</b>	<b>R9</b>	<b>Rf</b>	<b>Rg</b>
<b>h-line</b>	870lm 27lm/W	2190lm 65.2lm/W	2150lm 64.1lm/W	1890lm 56.4lm/W	810lm 24.1lm/W	94	74	92	102



Data derived from independent UKAS/IESNA LM-79-08 accredited testing of production samples.

# KOH 40-S High Power

## Code Table



### FIXTURE

Model	Finish	Cover	Grade	LED Type <sup>1</sup>	Colour (CCT)	Length Availability <sup>2</sup>	Lens	Module Type*	Control Type	Input											
KOH 40-S	Matt White Paint	MW	Louvre (KOH)	T	h	h	High Power	957A	2200K <sup>4</sup>	22	580mm	m	0580	Frosted lens	FL	Complete	FE	0-10V	4	AC 100V	b
	Matt Silver Paint	MS							2700K <sup>4</sup>	27	1140mm	m	1140	10°	10	Start	LE	DALI	3	AC 220-240V	d
	Matt Grey Paint	MG							3000K <sup>4</sup>	30	1700mm	m	1700	20°	20	Middle	XE	No Controller	5	No PSU	i
	Matt Black Paint	MB							3500K <sup>4</sup>	35	22.05in	i	0022	30°	30	End	RE				
	Bronze Paint	BP							4000K <sup>4</sup>	40	44.09in	i	0044	Spread lens	SL						
					5000K <sup>4</sup>	50	66.14in	i	0066												

<sup>1</sup> Refer to **LED Grading Key** on **Specification sheet** page

<sup>2</sup> Refer to **Length Availability List** or enter total run length instead of length code

<sup>3</sup> 2700K/3000K – 90CRI

<sup>4</sup> 2200K/3500K/4000K – 80CRI

<sup>5</sup> 5000K – 75CRI

\* Module Type (various fixture lengths)

Complete	FE	
Start	LE	
Middle	XE	
End	RE	

### Code Example:

GA	-	MW	-	T	-	h	-	957A	-	30	-	m	-	1140	-	30	-	FE	-	4	-	d
KOH 40-S		Matt White Paint		Louvre (KOH)		h		High Power		3000K		1140mm		30°		Complete		0-10V		AC 220-240V		

### ACCESSORIES

#### Mounting Accessories

KKJT-03	Joining Bar
KKSW-07	Suspension Mounting Kit
KKSW-08	Ceiling Rose

#### Connection Accessories

KKCN-26	Power Feed Cable
KKCN-31	Power Feed Cable (Non-Fabric)

\* Refer to **Power feed** on **Accessories** pages

#### PSU/Driver

0-10V/DALI (Integrated Power Supply)

\* Refer to **Mounting accessories** on **Accessories** pages

### LED ENGINE VARIANTS (LED STRIP TYPE)

Colour	LED	Lumen/module	Wattage	Spec Doc	Length
Single CCT	630A	1170/module	17.5	KOH 40-S High CRI	560/1120/1680mm (22.05/44.10/66.14in)
	957A	2190/module	33.5	KOH 40-S High Power	560/1120/1680mm (22.05/44.10/66.14in)

\* Performance data: h-line, louvre + 10° lens, 3000K, 580mm module

# KOH 40-S High Power Length Availability List

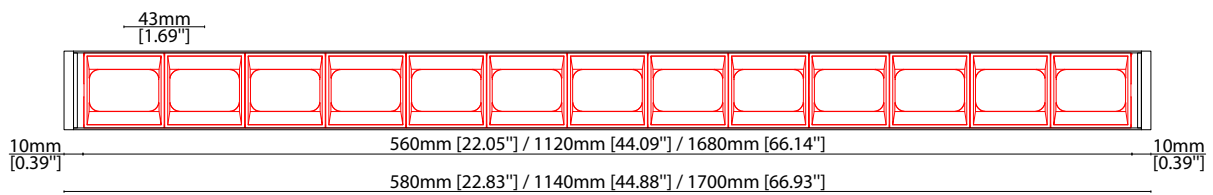


Length Code		Fixture Length <sup>1</sup>		LED Strip <sup>2</sup>		End Cap Dimension <sup>3</sup>		Wattage (W)	Output (lm)
Metric	Imperial(US)	Metric	Imperial(US)	Metric	Imperial(US)	Metric	Imperial(US)		3000K (Test Data)
m0580	i0023	580mm	22.83in	560mm	22.05in	10mm	0.39in	33.50	2184
m1140	i0045	1140mm	44.88in	1120mm	44.09in	10mm	0.39in	67.00	4368
m1700	i0067	1700mm	66.93in	1680mm	66.14in	10mm	0.39in	100.50	6553

<sup>1</sup> Actual total overall length of light fixture (LED strip + end caps + void/wire hole)

<sup>2</sup> Actual length of PCB strip

<sup>3</sup> Actual length of 2x end caps



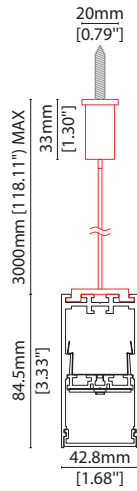
### MOUNTING ACCESSORIES

Note: Accessories are to be ordered separately with corresponding code shown below.



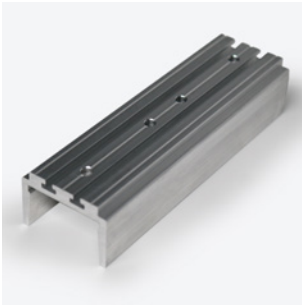
#### KKS-07

Suspension mounting kit  
(allow 2 per metre/40in)  
Aluminium finish  
L20/W20/H3000mm  
(L0.79/W0.79/H118.11")



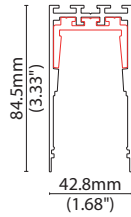
#### KKS-08

Ceiling rose  
Dia 127mm (5") x H 6.35mm (0.25")  
Maximum weight 20kg per/kit



#### KKJ-03

Joining bar  
(allow 1 per join)  
L120/W38.3/H26.3mm  
(L4.72/W1.50/H1.03")



### POWER CABLE



#### KKN-26

Power Feed Cable

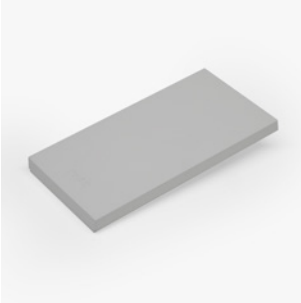


#### KKN-31

Power Feed Cable (Non-Fabric)

**END CAPS AND LIGHT LEAK TAPE**

---



- KKEC-S1 (2no.) - End cap pair (Mat white)
- KKEC-S2 (2no.) - End cap pair (Mat silver)
- KKEC-S3 (2no.) - End cap pair (Mat gray)
- KKEC-S4 (2no.) - End cap pair (Mat black)
- KKEC-S5 (2no.) - End cap pair (Bronze)



**Black tape** (prevents light leak)